



What We All Need to Know About Radioactive Waste

Sean Dunagan, *Director of Waste
Management and Operations*

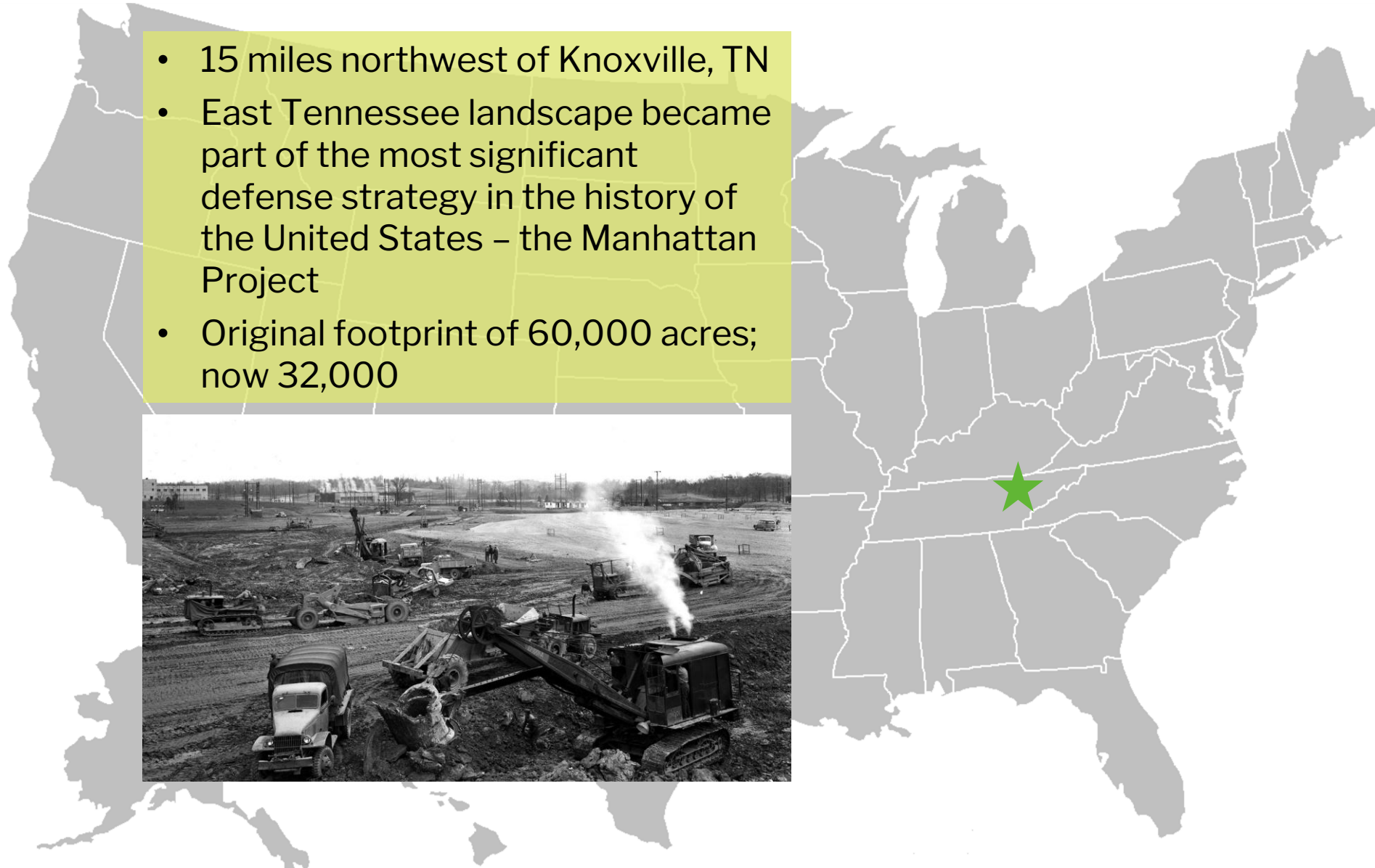
August 2025



Cleanup Today for a Nuclear Tomorrow™

Location Selected to Support U.S. World War II Defense Strategy

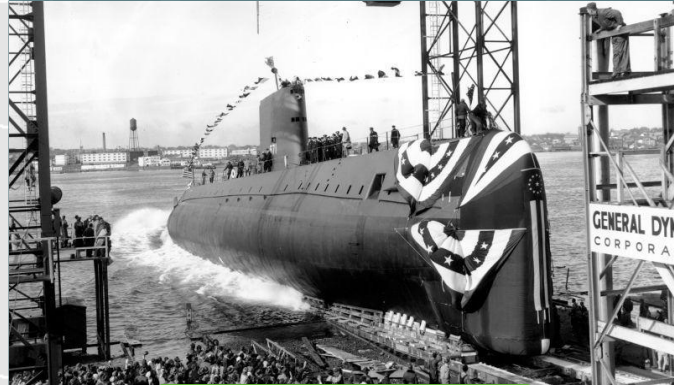
- 15 miles northwest of Knoxville, TN
- East Tennessee landscape became part of the most significant defense strategy in the history of the United States – the Manhattan Project
- Original footprint of 60,000 acres; now 32,000



Serving Defense and Energy Needs for 80+ Years



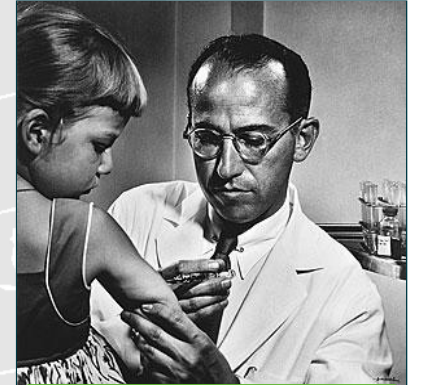
**Provided fuel for
atomic bomb
that ended
World War II**



**Provided fuel to
the world's first
nuclear submarine**



**Provided fuel
for the
first US nuclear
power reactor**



**Scientists
helped
identify ways
to purify flu
and polio**

About UCOR

Prime Environmental Cleanup Contractor for DOE's Oak Ridge Office of Environmental Management

	<p>Leveraging the past, built for the future</p>  <p>amentum</p> <p>wit Honeywell</p>	<p>Proven delivery</p>   <p>Enhanced capability</p>  
---	--	---

<p>Oak Ridge Reservation Cleanup Contract</p>
<p>10-15 year period of performance</p>
<p>Y-12/ORNL + Remaining Heritage Center</p>
<p>\$8.3B</p>

Workforce of
~2,500

What We Do

Decommissioning,
Deactivation and
Demolition of Facilities
and Structures

Waste Disposition
and Management

Cleanup of
Contaminated Soil
and Groundwater

Operations,
Surveillance and
Maintenance of
Nuclear Facilities

Facility Design and
Construction

Reindustrialization
and Conservation of
Federal Land

National Historic
Preservation





SQ.
FT.

MASSIVE STRUCTURES

millions of square feet to demolish



UNIQUE HAZARDS

- Plutonium
- Uranium
- Various Fission Products
- Other Radiological Hazards
- Pyrophorics
- Shock Sensitive Materials
- Explosive Materials
- Lead
- Mercury
- Asbestos
- High Acids/Bases
- Chemicals
- Beryllium
- Flammable Materials

COMPLEX ENVIRONMENTS



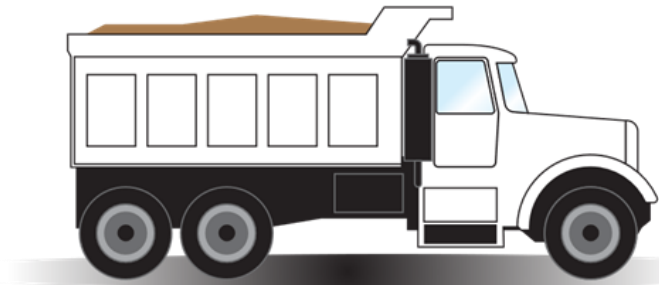
- ↘ First-of-a-kind cleanup/demolition
- ↘ Deteriorating structures
- ↘ Classified components
- ↘ Volumes of waste



Success Enabled by Waste Factory

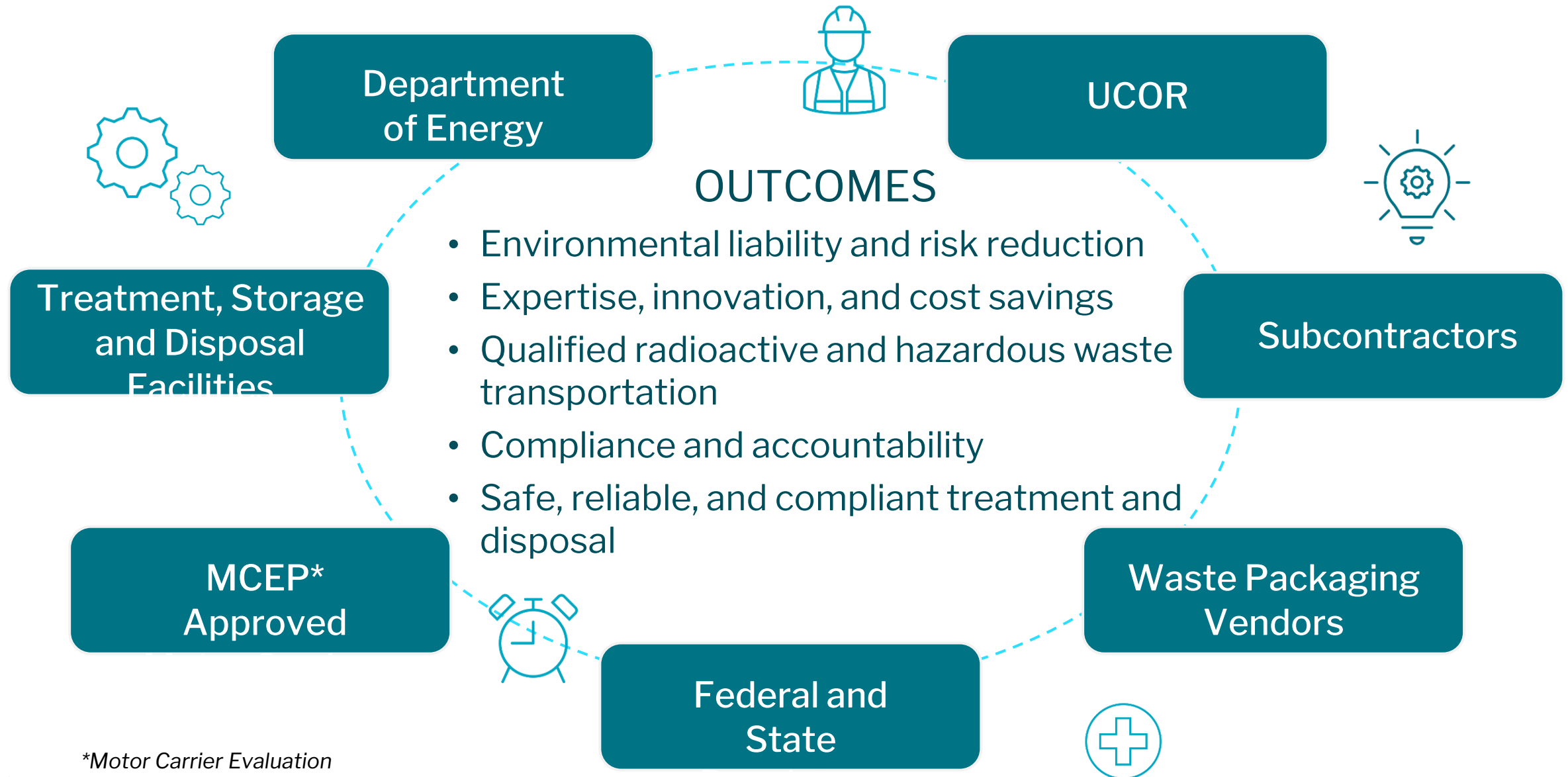
Approach

Waste Disposition Strategy



Utilizes both onsite and offsite disposal facilities | Safely disposed of 1.8+ million cubic yards of waste

Partnerships are Essential



*Motor Carrier Evaluation Program

Outcomes Enabled by Tennessee Partnerships

**Environmental Management
Waste Management Facility**



**Environmental Management
Disposal Facility**



**Onsite Disposal Facilities: Critical Path to
Cleanup**

Conclusion


- Performing our moral and ethical obligation to the country
- Proven Waste Factory/disposition approach
- Waste disposal paths determined before cleanup begins
- Success enabled through partnerships

Sean Dunagan

575-361-7096

Sean.Dunagan@orcc.doe.gov

P.O. Box 4699, MS 7402 Oak Ridge, TN 37831



Cleanup Today
for a Nuclear Tomorrow™