



# Updates from the National Institutes of Health

Cathy Ribaud, M.S.

Former RSO, NIH

OAS Conference, August 2024

# National Institutes of Health



Intramural Research campus in Bethesda, MD

35,000 employees, 7000 permanent scientists

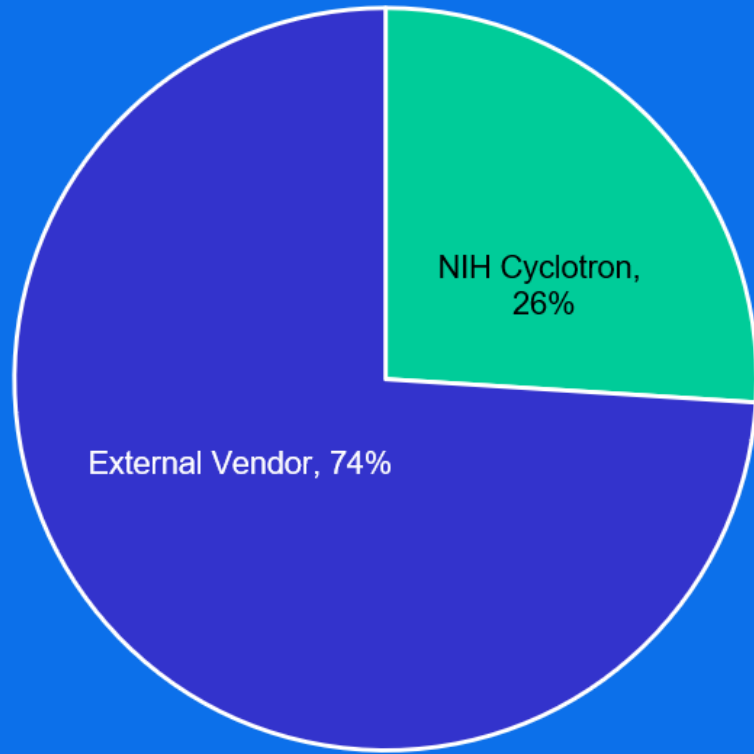
7 million square feet occupied building space

# Division of Radiation Safety

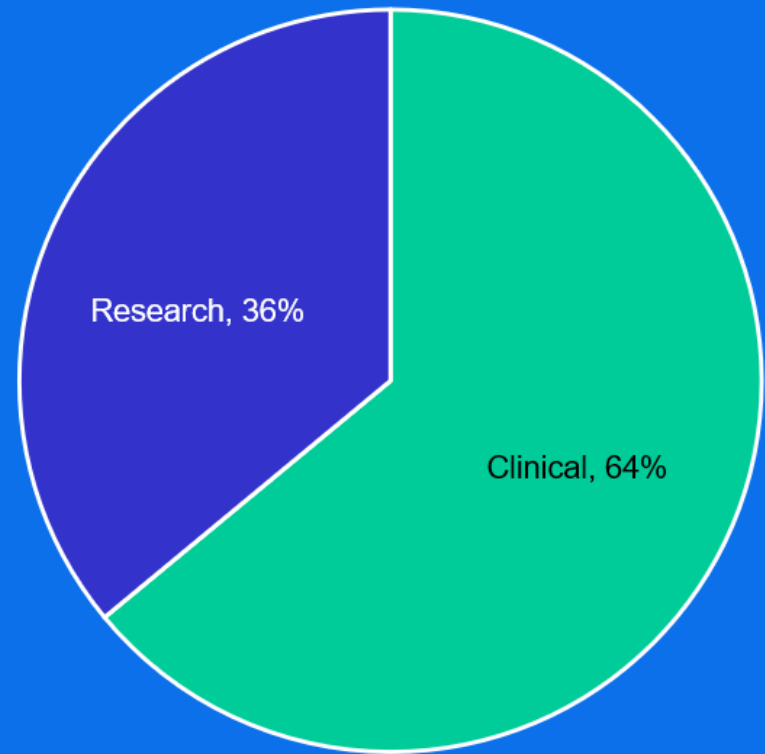
- 28 full-time employees
- 11 full-time contractors (rad safety support)
  
- ~ 350 Authorized Users
- ~ 3000 Individual Users
- ~ 450 posted labs
- ~ 5500 RAM Package deliveries
- 20 active protocols\*

# Radioactive Material (RAM) Receipt, CY2023

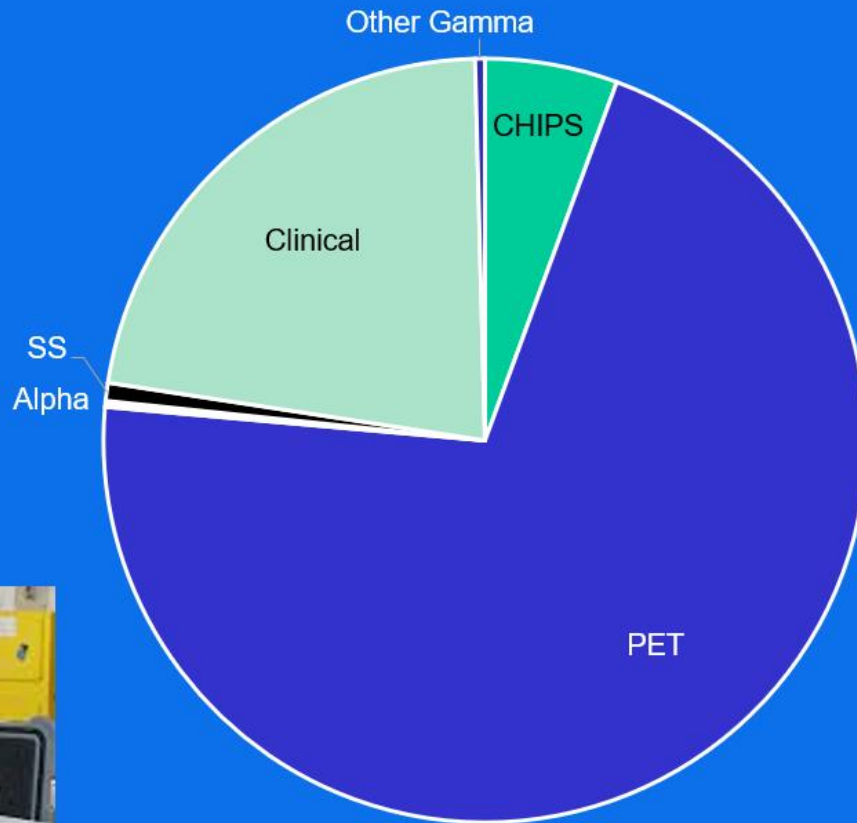
RAM Point of Origin



Use of RAM at NIH

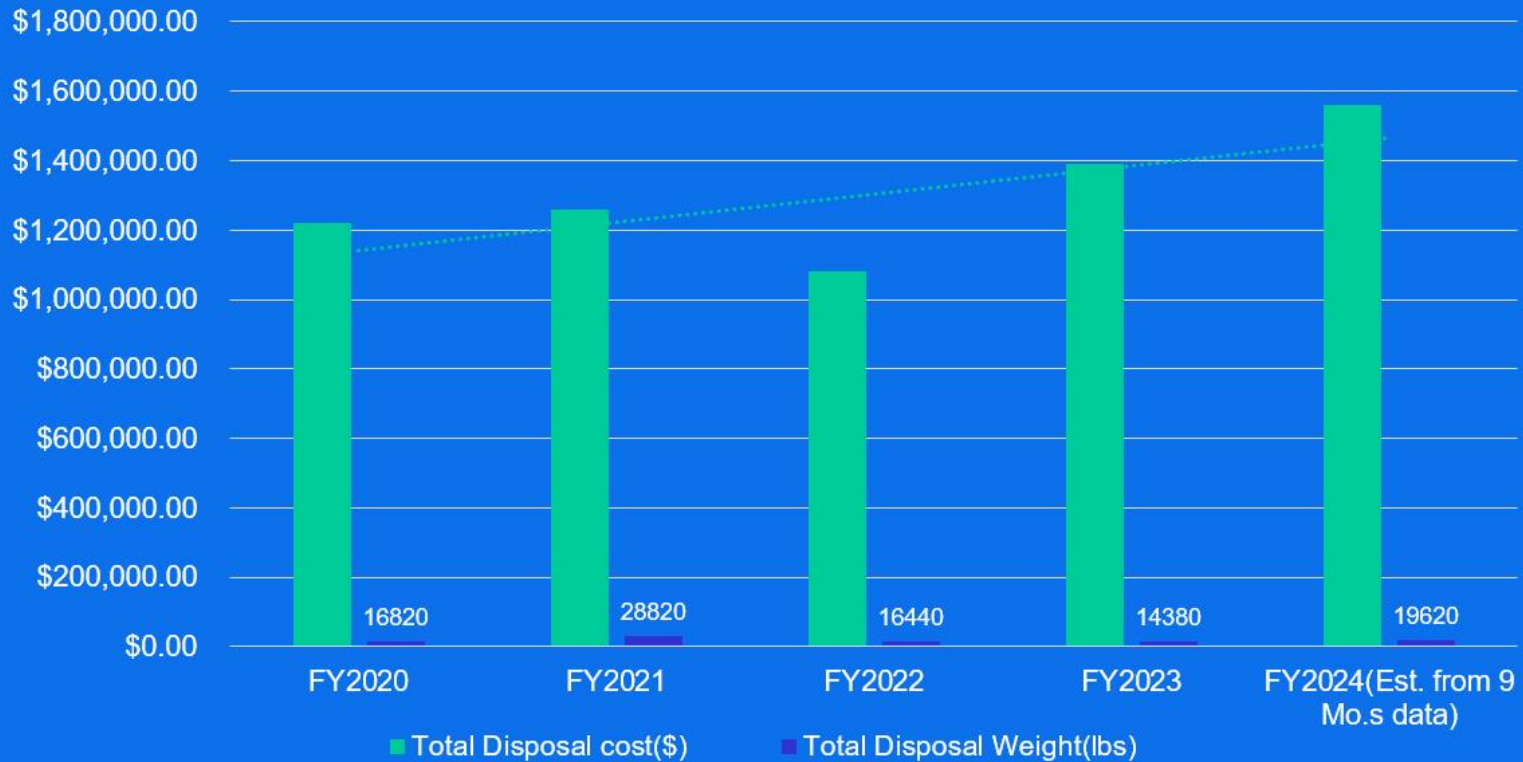


# RAM Receipt, CY2023

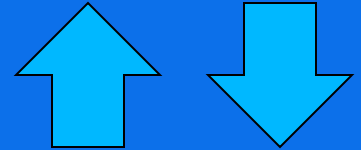


CHIPS	310
PET	3906
Alpha	14
Sealed Source	42
Clinical	1223
Other Gamma	23

# Radwaste Disposal Costs



# Current Trends in Research



- Declining use of RAM
- Replacement of Cs irradiators with x-ray
- Increasing use of PET and PET/CT imaging
- Specific increase in F-18 in Nuc Med\*
- Expanded clinical use of RAM in therapies (Lu-177, Ra-223)
- Novel clinical applications of alpha emitters (Pb-212, Th-227, Ac-225, others)

# How do we support this?

## *Importance of competent staff to support the RSO!*

- Encourage pursuit of CHP or advanced degree coursework
- Encourage attendance at HPS meetings
- Monthly technical speaker series
- Assignment of internal program area audit



# How do we support this?

***Importance of competent staff to support the RSO!***

**It starts in the beginning:**

- HP Orientation upon hiring
- Assigned mentor
- Competency assessment program
- Spill drills and exercises

# Competency Assessments

- 39 individual health physics activities
- Is your level: Basic, Proficient, or Mastery?
- Matrix determines which HP needs to develop which competency level
- Supervisor assesses throughout HP development period



# Competency Assessments

- All HPs are expected to develop *Basic* knowledge of all HP activities
- All HPs are expected to develop *Proficient* knowledge of all HP activities included in their assigned duties
- HP program leaders are expected to develop *Mastery* knowledge of their specific HP program area(s)

# Spill Drills/Exercises



- Internal to DRS staff
- Joint with radiation workers as part of refresher training
- As-needed basis for radiation workers who need improvement in radiation survey techniques

# Spill Drills/Exercises



- Local Law Enforcement, Fire Departments, County Emergency Responders, etc.
- Radiation detection / identification instruments
- Find the source, evaluate the hazard exercises

# How can NIH support the NMP?

- Can share copies of our rad worker training videos
- Can share copies of our HP Competency assessment models
- Can offer tour of NIH and Rad Safety
- Can partner with an Agreement State to shadow our HP team
- Can share scenario training exercises provided to staff and local first responders

Thank you! Questions?

[cathy@ribaudoville.net](mailto:cathy@ribaudoville.net)

240-515-6798

Current NIH RSO is  
Mike Roberson, CHP

[roberson@ors.od.nih.gov](mailto:roberson@ors.od.nih.gov)

301-496-5774